








Elevation D

-  Four bedrooms, two and a half baths.
-  Master bedroom with large walk-in closet and garden tub
-  Features two bay garage with optional third car space.

Elevation B



-  Family room with vaulted ceiling and corner fireplace.

-  Large kitchen with island opens onto a morning room that overlooks the deck

Elevation C

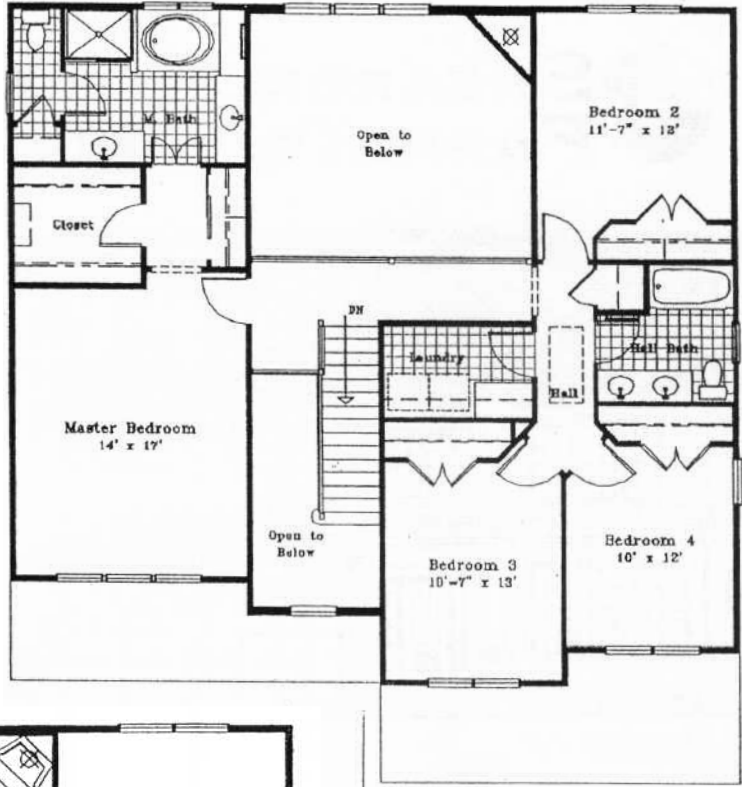


Elevation A

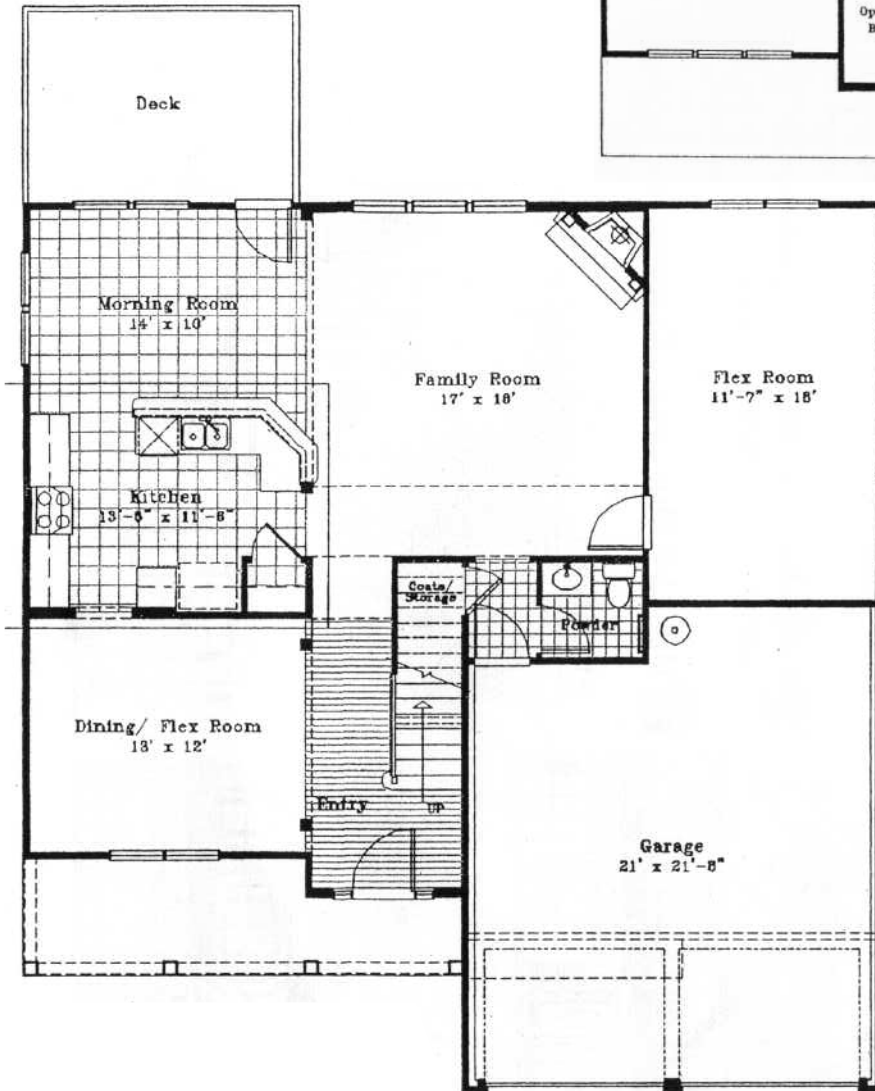




Second Floor Plan



First Floor Plan



## Newport • 2516

*Because we are continually improving our product, we reserve the right to revise or substitute features, architectural details or materials. Floor plan dimensions & exteriors are illustrative only and are not part of a legal contract.*

202 North Dixon Avenue, Cary, NC 27513 / 919.481.4511  
WWW.MURDOCKANDGANNON.COM